



VALUE AVERAGING PERFORMANCE ANALYSIS

Security Name: Vanguard Total St

Time Period: 60

IMPORTANT DISCLOSURES FOR BACKTEST PERFORMANCE RESULTS

Backtesting is the process of evaluating a core strategy by applying it to historical data. Backtested performance results are provided for purposes of illustrating historical performance had a core strategy had been available during the relevant period. Backtested performance results are hypothetical and have inherent limitations. Blue Chip Fund Management makes no representation that the Value Averaging strategy will achieve performance similar to any backtested performance results. Actual results could differ materially from backtested performance and future results could differ materially from backtested performance. Past performance is no indication or guarantee of future results.

Backtested performance results: (i) do not reflect the deduction of any management fees or trading commissions; (ii) are not based on actual trading and do not reflect any market impact of buying and selling securities, trade timing and security liquidity; (iii) reflect prices that are fully adjusted for dividends and corporate actions (e.g., stock splits).

Blue Chip Fund Management does not represent that backtested performance information is accurate, complete or current, and Blue Chip Fund Management has no liability with respect thereto. The Blue Chip Fund Management strategies are subject to change without notice and Blue Chip Fund Management has no obligation to update you as to any such changes. The information provided herein comes from what Blue Chip Fund Management believes to be reliable sources. Blue Chip Fund Management, however, makes no representations as to its reliability or accuracy, and you should undertake independent analysis to ensure the accuracy of the information.

Rates of Return Calculations - Definition of performance measures

Investment performance seems like it should be easy to measure and even easier to understand, but investors often find that interpreting performance measurements can be confusing. Performance measures are meant to act as a yardstick to help you evaluate how an individual security or your portfolio has navigated financial markets. The information should give an investor a common means of measure against other investments and other portfolio managers. Even though the calculation methods below will all give you a different result, they are all considered to be correct, it just depends on how they are used and interpreted. The definitions below explain the differences to help you better understand the different performance measures used.

Holding Period Return (HPR) = Also known as the Simple Rate of Return, it is change in a portfolio's total market value over a given period. Multiple time periods, cash contributions and withdrawals can all distort the HPR and provide an inaccurate picture.

Time-Weighted Return (TWR) = Measures how much your investments returned on average, without the influence of the size or timing of contributions. It eliminates the effect of additions and withdrawals that can distort Dollar-Weighted Returns by measuring the performance as a percent of capital at work during each interval between cash flows and then linking them together to produce a return for a stated period. TWR is the industry standard method for measuring the investment performance of portfolios.

Dollar-Weighted Return (DWR) = Also referred to as the Internal Rate of Return (IRR) is both time and dollar weighted. It is highly influenced by the timing of cash flows into and out of a security. Therefore, the return is higher when more money is invested during periods of greater price appreciation. This method is more "investor-centric" because it does not isolate a funds' performance from an investor's luck or timing. It measures changes in total dollar value, treating any additions or withdrawals of capital as a part of the Return along with income and capital gains/losses. DWR is the best rate of return to use if an investor wants to find out how his historical return compares to his desired or target rate of return.



VALUE AVERAGING PERFORMANCE ANALYSIS

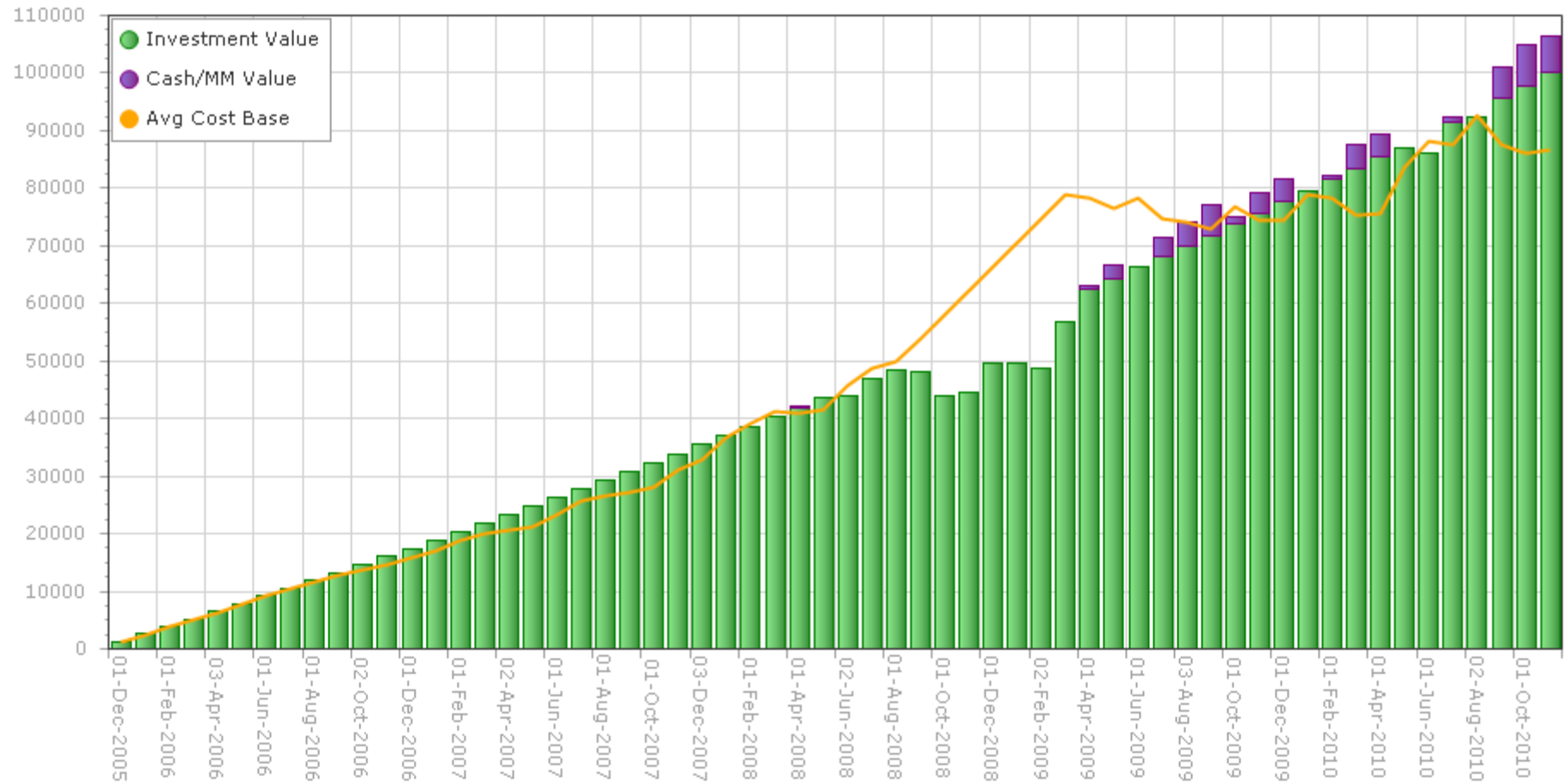
Market Data	Historic Market Data	Value Path Type	Specific Future Value	Equity Sale Type	Immediate
Ticker	vti Vanguard Total St	Current Value	\$0.00	Tax Rate	0.00 %
End Date	11/1/2010	Future Value	\$100,000.00	MM Initial Value	\$0.00
		Cash in First Period	\$1,269.44	MM Return Rate	0.00 %
		Value Path Growth Rate	8.00 %	New Cash (min)	0.00
Duration (Periods)	60	Payment Growth Rate	3.00 %	New Cash (max)	3.00
PeriodType	Monthly	Board Lot Rounding	None To 100		

Value Averaging		Dollar-Cost Averaging	
<i>Equity Data</i>		<i>Equity Data</i>	
Average Cost Per Share	\$53.49	Average Cost Per Share	\$56.44
Adjusted Cost Base	\$86,714.39	Adjusted Cost Base	\$82,065.07
Final Equities Value	\$100,000.00	Final Equities Value	\$89,679.61
Equity Rates of Return*		Equity Rates of Return*	
Holding Period Total Return	15.32 %	Holding Period Total Return	9.28 %
Annualized Return	2.94 %	Annualized Return	1.82 %
Time-Weighted Total Return	9.32 %	Time-Weighted Total Return	9.32 %
Annualized Time-Weighted Return	1.83 %	Annualized Time-Weighted Return	1.83 %
Dollar Weighted Total Return	30.63 %	Dollar Weighted Total Return	19.64 %
Annualized Dollar Weighted Return	5.59 %	Annualized Dollar Weighted Return	3.71 %
<i>Money Market Data</i>		<i>Money Market Data</i>	
Final Money Market Value	\$6,458.70	Final Money Market Value	\$0.00
<i>Overall Portfolio Data</i>		<i>Portfolio Data</i>	
Final Portfolio Value	\$106,458.70	Final Portfolio Value	\$89,679.61

* see the cover page for explanation of the rates of return calculations

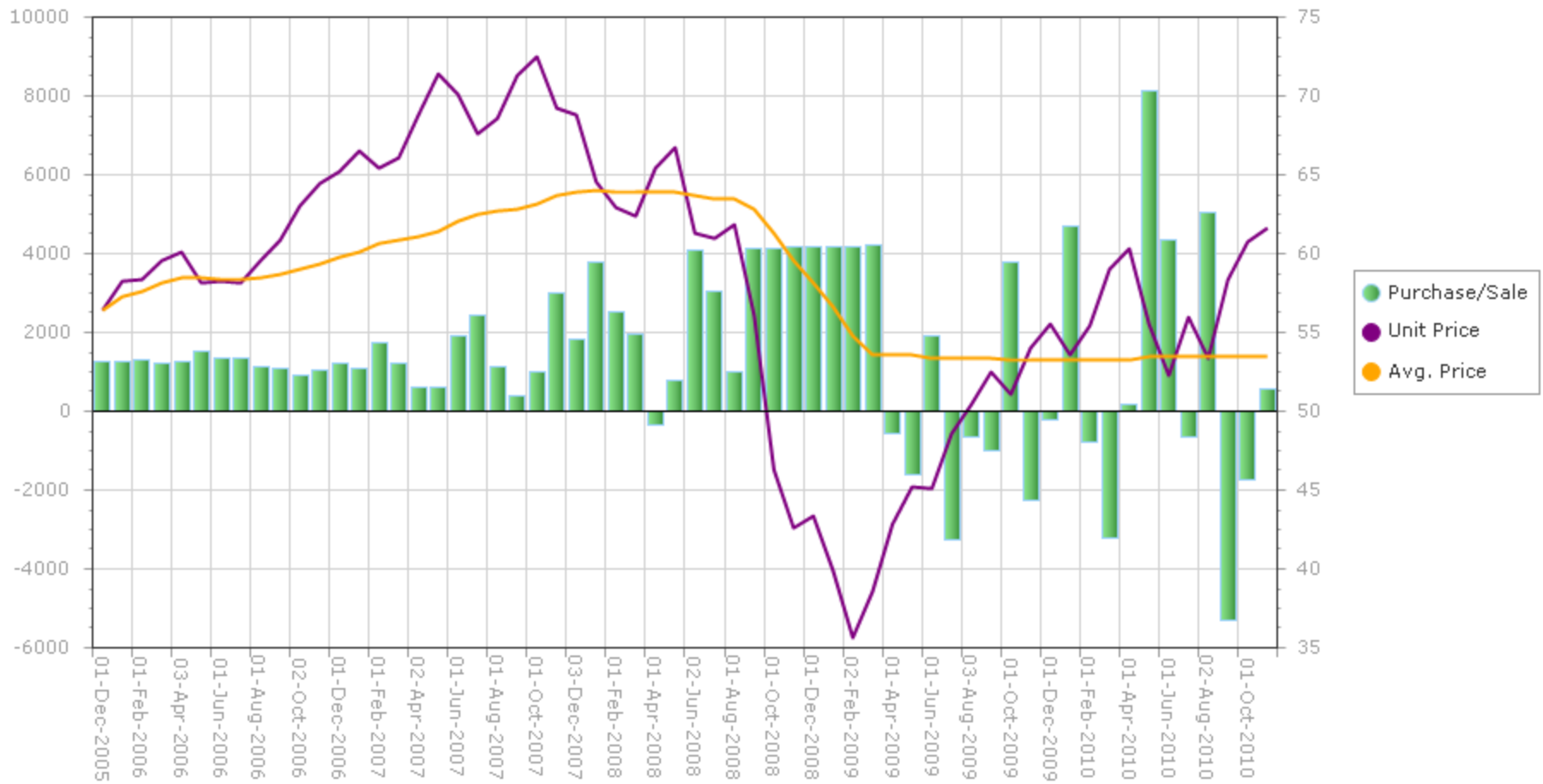
VALUE AVERAGING PERFORMANCE ANALYSIS

Value Average Total Portfolio Value



VALUE AVERAGING PERFORMANCE ANALYSIS

Transaction History and Unit Price





VALUE AVERAGING PERFORMANCE ANALYSIS

Value Average Data

	Date	Nav	Inv. Growth	Pmt. Growth	Value Path	Shares Before	Shares To Buy	Shares After	Inv. Before	Req. To Inv.	Inv. After	MM Before	MM After	Cash Inv.	MM Inv.	Total Inv.	Total Value
1	12/1/2005	\$56.42	\$0	\$1,269	\$1,269	0.000	22.500	22.500	\$0	\$1,269	\$1,269	\$0	\$0	\$1,269	\$0	\$1,269	\$1,269
2	1/3/2006	\$58.23	\$8	\$1,273	\$2,551	22.500	21.301	43.801	\$1,310	\$1,240	\$2,551	\$0	\$0	\$1,240	\$0	\$1,240	\$2,551
3	2/1/2006	\$58.36	\$17	\$1,276	\$3,843	43.801	22.055	65.855	\$2,556	\$1,287	\$3,843	\$0	\$0	\$1,287	\$0	\$1,287	\$3,843
4	3/1/2006	\$59.56	\$26	\$1,279	\$5,148	65.855	20.577	86.432	\$3,922	\$1,226	\$5,148	\$0	\$0	\$1,226	\$0	\$1,226	\$5,148
5	4/3/2006	\$60.13	\$34	\$1,282	\$6,464	86.432	21.075	107.507	\$5,197	\$1,267	\$6,464	\$0	\$0	\$1,267	\$0	\$1,267	\$6,464
6	5/1/2006	\$58.19	\$43	\$1,285	\$7,793	107.507	26.414	133.922	\$6,256	\$1,537	\$7,793	\$0	\$0	\$1,537	\$0	\$1,537	\$7,793
7	6/1/2006	\$58.27	\$52	\$1,289	\$9,133	133.922	22.822	156.744	\$7,804	\$1,330	\$9,133	\$0	\$0	\$1,330	\$0	\$1,330	\$9,133
8	7/3/2006	\$58.20	\$61	\$1,292	\$10,486	156.744	23.431	180.175	\$9,122	\$1,364	\$10,486	\$0	\$0	\$1,364	\$0	\$1,364	\$10,486
9	8/1/2006	\$59.53	\$70	\$1,295	\$11,851	180.175	18.904	199.078	\$10,726	\$1,125	\$11,851	\$0	\$0	\$1,125	\$0	\$1,125	\$11,851
10	9/1/2006	\$60.88	\$79	\$1,298	\$13,228	199.078	18.209	217.287	\$12,120	\$1,109	\$13,228	\$0	\$0	\$1,109	\$0	\$1,109	\$13,228
11	10/2/2006	\$63.03	\$88	\$1,302	\$14,618	217.287	14.637	231.924	\$13,696	\$923	\$14,618	\$0	\$0	\$923	\$0	\$923	\$14,618
12	11/1/2006	\$64.50	\$97	\$1,305	\$16,020	231.924	16.454	248.378	\$14,959	\$1,061	\$16,020	\$0	\$0	\$1,061	\$0	\$1,061	\$16,020
13	12/1/2006	\$65.27	\$107	\$1,308	\$17,435	248.378	18.747	267.125	\$16,212	\$1,224	\$17,435	\$0	\$0	\$1,224	\$0	\$1,224	\$17,435
14	1/3/2007	\$66.49	\$116	\$1,311	\$18,863	267.125	16.569	283.694	\$17,761	\$1,102	\$18,863	\$0	\$0	\$1,102	\$0	\$1,102	\$18,863
15	2/1/2007	\$65.41	\$126	\$1,315	\$20,303	283.694	26.704	310.398	\$18,556	\$1,747	\$20,303	\$0	\$0	\$1,747	\$0	\$1,747	\$20,303
16	3/1/2007	\$66.14	\$135	\$1,318	\$21,756	310.398	18.546	328.944	\$20,530	\$1,227	\$21,756	\$0	\$0	\$1,227	\$0	\$1,227	\$21,756
17	4/2/2007	\$68.80	\$145	\$1,321	\$23,223	328.944	8.593	337.538	\$22,631	\$591	\$23,223	\$0	\$0	\$591	\$0	\$591	\$23,223
18	5/1/2007	\$71.36	\$155	\$1,324	\$24,702	337.538	8.621	346.159	\$24,087	\$615	\$24,702	\$0	\$0	\$615	\$0	\$615	\$24,702
19	6/1/2007	\$70.10	\$165	\$1,328	\$26,194	346.159	27.513	373.672	\$24,266	\$1,929	\$26,194	\$0	\$0	\$1,929	\$0	\$1,929	\$26,194
20	7/2/2007	\$67.63	\$175	\$1,331	\$27,700	373.672	35.912	409.583	\$25,271	\$2,429	\$27,700	\$0	\$0	\$2,429	\$0	\$2,429	\$27,700
21	8/1/2007	\$68.62	\$185	\$1,334	\$29,219	409.583	16.229	425.812	\$28,106	\$1,114	\$29,219	\$0	\$0	\$1,114	\$0	\$1,114	\$29,219
22	9/4/2007	\$71.26	\$195	\$1,338	\$30,752	425.812	5.732	431.544	\$30,343	\$408	\$30,752	\$0	\$0	\$408	\$0	\$408	\$30,752
23	10/1/2007	\$72.54	\$205	\$1,341	\$32,298	431.544	13.699	445.243	\$31,304	\$994	\$32,298	\$0	\$0	\$994	\$0	\$994	\$32,298
24	11/1/2007	\$69.26	\$215	\$1,344	\$33,858	445.243	43.607	488.850	\$30,838	\$3,020	\$33,858	\$0	\$0	\$3,020	\$0	\$3,020	\$33,858
25	12/3/2007	\$68.78	\$226	\$1,348	\$35,431	488.850	26.290	515.139	\$33,623	\$1,808	\$35,431	\$0	\$0	\$1,808	\$0	\$1,808	\$35,431
26	1/2/2008	\$64.54	\$236	\$1,351	\$37,019	515.139	58.438	573.578	\$33,247	\$3,772	\$37,019	\$0	\$0	\$3,772	\$0	\$3,772	\$37,019
27	2/1/2008	\$62.92	\$247	\$1,355	\$38,620	573.578	40.219	613.797	\$36,090	\$2,531	\$38,620	\$0	\$0	\$2,531	\$0	\$2,531	\$38,620
28	3/3/2008	\$62.36	\$257	\$1,358	\$40,236	613.797	31.417	645.214	\$38,276	\$1,959	\$40,236	\$0	\$0	\$1,959	\$0	\$1,959	\$40,236
29	4/1/2008	\$65.41	\$268	\$1,361	\$41,865	645.214	-5.172	640.042	\$42,203	(\$338)	\$41,865	\$0	\$338	\$0	(\$338)	(\$338)	\$42,203



VALUE AVERAGING PERFORMANCE ANALYSIS

Value Average Data

	Date	Nav	Inv. Growth	Pmt. Growth	Value Path	Shares Before	Shares To Buy	Shares After	Inv. Before	Req. To Inv.	Inv. After	MM Before	MM After	Cash Inv.	MM Inv.	Total Inv.	Total Value
30	5/1/2008	\$66.73	\$279	\$1,365	\$43,509	640.042	11.974	652.015	\$42,710	\$799	\$43,509	\$338	\$0	\$461	\$338	\$799	\$43,509
31	6/2/2008	\$61.31	\$290	\$1,368	\$45,167	652.015	66.947	718.963	\$39,975	\$5,192	\$44,080	\$0	\$0	\$4,105	\$0	\$4,105	\$44,080
32	7/1/2008	\$60.93	\$301	\$1,372	\$46,840	718.963	49.787	768.750	\$43,806	\$3,034	\$46,840	\$0	\$0	\$3,034	\$0	\$3,034	\$46,840
33	8/1/2008	\$61.82	\$312	\$1,375	\$48,527	768.750	16.226	784.976	\$47,524	\$1,003	\$48,527	\$0	\$0	\$1,003	\$0	\$1,003	\$48,527
34	9/2/2008	\$56.10	\$324	\$1,378	\$50,229	784.976	73.715	858.691	\$44,037	\$6,192	\$48,173	\$0	\$0	\$4,135	\$0	\$4,135	\$48,173
35	10/1/2008	\$46.30	\$335	\$1,382	\$51,946	858.691	89.541	948.232	\$39,757	\$12,189	\$43,903	\$0	\$0	\$4,146	\$0	\$4,146	\$43,903
36	11/3/2008	\$42.59	\$346	\$1,385	\$53,678	948.232	97.584	1045.816	\$40,385	\$13,292	\$44,541	\$0	\$0	\$4,156	\$0	\$4,156	\$44,541
37	12/1/2008	\$43.34	\$358	\$1,389	\$55,424	1045.816	96.135	1141.951	\$45,326	\$10,099	\$49,492	\$0	\$0	\$4,166	\$0	\$4,166	\$49,492
38	1/2/2009	\$39.85	\$369	\$1,392	\$57,186	1141.951	104.816	1246.767	\$45,507	\$11,679	\$49,684	\$0	\$0	\$4,177	\$0	\$4,177	\$49,684
39	2/2/2009	\$35.66	\$381	\$1,396	\$58,963	1246.767	117.424	1364.191	\$44,460	\$14,503	\$48,647	\$0	\$0	\$4,187	\$0	\$4,187	\$48,647
40	3/2/2009	\$38.61	\$393	\$1,399	\$60,756	1364.191	108.724	1472.915	\$52,671	\$8,084	\$56,869	\$0	\$0	\$4,198	\$0	\$4,198	\$56,869
41	4/1/2009	\$42.85	\$405	\$1,403	\$62,563	1472.915	-12.860	1460.055	\$63,114	(\$551)	\$62,563	\$0	\$551	\$0	(\$551)	(\$551)	\$63,114
42	5/1/2009	\$45.19	\$417	\$1,406	\$64,387	1460.055	-35.255	1424.800	\$65,980	(\$1,593)	\$64,387	\$551	\$2,144	\$0	(\$1,593)	(\$1,593)	\$66,531
43	6/1/2009	\$45.13	\$429	\$1,410	\$66,226	1424.800	42.644	1467.444	\$64,301	\$1,925	\$66,226	\$2,144	\$220	\$0	\$1,925	\$1,925	\$66,445
44	7/1/2009	\$48.62	\$442	\$1,413	\$68,081	1467.444	-67.185	1400.259	\$71,347	(\$3,267)	\$68,081	\$220	\$3,486	\$0	(\$3,267)	(\$3,267)	\$71,567
45	8/3/2009	\$50.43	\$454	\$1,417	\$69,951	1400.259	-13.162	1387.097	\$70,615	(\$664)	\$69,951	\$3,486	\$4,150	\$0	(\$664)	(\$664)	\$74,101
46	9/1/2009	\$52.51	\$466	\$1,420	\$71,838	1387.097	-19.014	1368.083	\$72,836	(\$998)	\$71,838	\$4,150	\$5,148	\$0	(\$998)	(\$998)	\$76,986
47	10/1/2009	\$51.13	\$479	\$1,424	\$73,741	1368.083	74.141	1442.224	\$69,950	\$3,791	\$73,741	\$5,148	\$1,358	\$0	\$3,791	\$3,791	\$75,099
48	11/2/2009	\$54.04	\$492	\$1,428	\$75,660	1442.224	-42.150	1400.074	\$77,938	(\$2,278)	\$75,660	\$1,358	\$3,635	\$0	(\$2,278)	(\$2,278)	\$79,295
49	12/1/2009	\$55.59	\$504	\$1,431	\$77,595	1400.074	-4.221	1395.854	\$77,830	(\$235)	\$77,595	\$3,635	\$3,870	\$0	(\$235)	(\$235)	\$81,465
50	1/4/2010	\$53.61	\$517	\$1,435	\$79,547	1395.854	87.964	1483.817	\$74,832	\$4,716	\$79,547	\$3,870	\$0	\$846	\$3,870	\$4,716	\$79,547
51	2/1/2010	\$55.45	\$530	\$1,438	\$81,516	1483.817	-13.736	1470.081	\$82,278	(\$762)	\$81,516	\$0	\$762	\$0	(\$762)	(\$762)	\$82,278
52	3/1/2010	\$59.00	\$543	\$1,442	\$83,501	1470.081	-54.805	1415.276	\$86,735	(\$3,234)	\$83,501	\$762	\$3,995	\$0	(\$3,234)	(\$3,234)	\$87,496
53	4/1/2010	\$60.28	\$557	\$1,445	\$85,503	1415.276	3.161	1418.437	\$85,313	\$191	\$85,503	\$3,995	\$3,805	\$0	\$191	\$191	\$89,308
54	5/3/2010	\$55.53	\$570	\$1,449	\$87,522	1418.437	146.800	1565.237	\$78,766	\$8,757	\$86,918	\$3,805	\$0	\$4,347	\$3,805	\$8,152	\$86,918
55	6/1/2010	\$52.29	\$583	\$1,453	\$89,559	1565.237	83.343	1648.580	\$81,846	\$7,712	\$86,204	\$0	\$0	\$4,358	\$0	\$4,358	\$86,204
56	7/1/2010	\$55.96	\$597	\$1,456	\$91,612	1648.580	-11.482	1637.098	\$92,255	(\$643)	\$91,612	\$0	\$643	\$0	(\$643)	(\$643)	\$92,255
57	8/2/2010	\$53.32	\$611	\$1,460	\$93,683	1637.098	94.193	1731.291	\$87,290	\$6,393	\$92,312	\$643	\$0	\$4,380	\$643	\$5,022	\$92,312
58	9/1/2010	\$58.37	\$625	\$1,464	\$95,771	1731.291	-90.537	1640.754	\$101,055	(\$5,285)	\$95,771	\$0	\$5,285	\$0	(\$5,285)	(\$5,285)	\$101,055



VALUE AVERAGING PERFORMANCE ANALYSIS

Value Average Data

	Date	Nav	Inv. Growth	Pmt. Growth	Value Path	Shares Before	Shares To Buy	Shares After	Inv. Before	Req. To Inv.	Inv. After	MM Before	MM After	Cash Inv.	MM Inv.	Total Inv.	Total Value
59	10/1/2010	\$60.72	\$638	\$1,467	\$97,877	1640.754	-28.822	1611.933	\$99,627	(\$1,750)	\$97,877	\$5,285	\$7,035	\$0	(\$1,750)	(\$1,750)	\$104,911
60	11/1/2010	\$61.68	\$653	\$1,471	\$100,000	1611.933	9.338	1621.271	\$99,424	\$576	\$100,000	\$7,035	\$6,459	\$0	\$576	\$576	\$106,459



VALUE AVERAGING PERFORMANCE ANALYSIS

Dollar Cost Average Data

	Date	Nav	Cash Payment	Shares Before	Shares To Buy	Shares After	Inv. Before	Inv. After	MM Before	MM After	Total Inv.	Total Value
1	12/1/2005	\$56.42	\$1,269.44	0.000	22.500	22.500	\$0.00	\$1,269.44	\$0.00	\$0.00	\$1,269.44	\$1,269.44
2	1/3/2006	\$58.23	\$1,272.61	22.500	21.855	44.355	\$1,310.16	\$2,582.78	\$0.00	\$0.00	\$1,272.61	\$2,582.78
3	2/1/2006	\$58.36	\$1,275.79	44.355	21.861	66.216	\$2,588.54	\$3,864.34	\$0.00	\$0.00	\$1,275.79	\$3,864.34
4	3/1/2006	\$59.56	\$1,278.98	66.216	21.474	87.689	\$3,943.80	\$5,222.78	\$0.00	\$0.00	\$1,278.98	\$5,222.78
5	4/3/2006	\$60.13	\$1,282.18	87.689	21.323	109.013	\$5,272.76	\$6,554.94	\$0.00	\$0.00	\$1,282.18	\$6,554.94
6	5/1/2006	\$58.19	\$1,285.39	109.013	22.089	131.102	\$6,343.46	\$7,628.85	\$0.00	\$0.00	\$1,285.39	\$7,628.85
7	6/1/2006	\$58.27	\$1,288.60	131.102	22.114	153.217	\$7,639.33	\$8,927.93	\$0.00	\$0.00	\$1,288.60	\$8,927.93
8	7/3/2006	\$58.20	\$1,291.82	153.217	22.196	175.413	\$8,917.21	\$10,209.03	\$0.00	\$0.00	\$1,291.82	\$10,209.03
9	8/1/2006	\$59.53	\$1,295.05	175.413	21.755	197.167	\$10,442.33	\$11,737.38	\$0.00	\$0.00	\$1,295.05	\$11,737.38
10	9/1/2006	\$60.88	\$1,298.29	197.167	21.325	218.493	\$12,003.56	\$13,301.85	\$0.00	\$0.00	\$1,298.29	\$13,301.85
11	10/2/2006	\$63.03	\$1,301.53	218.493	20.649	239.142	\$13,771.61	\$15,073.14	\$0.00	\$0.00	\$1,301.53	\$15,073.14
12	11/1/2006	\$64.50	\$1,304.79	239.142	20.229	259.372	\$15,424.68	\$16,729.47	\$0.00	\$0.00	\$1,304.79	\$16,729.47
13	12/1/2006	\$65.27	\$1,308.05	259.372	20.041	279.412	\$16,929.18	\$18,237.23	\$0.00	\$0.00	\$1,308.05	\$18,237.23
14	1/3/2007	\$66.49	\$1,311.32	279.412	19.722	299.134	\$18,578.12	\$19,889.44	\$0.00	\$0.00	\$1,311.32	\$19,889.44
15	2/1/2007	\$65.41	\$1,314.60	299.134	20.098	319.232	\$19,566.37	\$20,880.97	\$0.00	\$0.00	\$1,314.60	\$20,880.97
16	3/1/2007	\$66.14	\$1,317.89	319.232	19.926	339.158	\$21,114.01	\$22,431.90	\$0.00	\$0.00	\$1,317.89	\$22,431.90
17	4/2/2007	\$68.80	\$1,321.18	339.158	19.203	358.361	\$23,334.06	\$24,655.24	\$0.00	\$0.00	\$1,321.18	\$24,655.24
18	5/1/2007	\$71.36	\$1,324.48	358.361	18.561	376.922	\$25,572.64	\$26,897.12	\$0.00	\$0.00	\$1,324.48	\$26,897.12
19	6/1/2007	\$70.10	\$1,327.79	376.922	18.941	395.863	\$26,422.20	\$27,750.00	\$0.00	\$0.00	\$1,327.79	\$27,750.00
20	7/2/2007	\$67.63	\$1,331.11	395.863	19.682	415.545	\$26,772.21	\$28,103.33	\$0.00	\$0.00	\$1,331.11	\$28,103.33
21	8/1/2007	\$68.62	\$1,334.44	415.545	19.447	434.992	\$28,514.72	\$29,849.16	\$0.00	\$0.00	\$1,334.44	\$29,849.16
22	9/4/2007	\$71.26	\$1,337.78	434.992	18.773	453.765	\$30,997.54	\$32,335.32	\$0.00	\$0.00	\$1,337.78	\$32,335.32
23	10/1/2007	\$72.54	\$1,341.12	453.765	18.488	472.253	\$32,916.14	\$34,257.26	\$0.00	\$0.00	\$1,341.12	\$34,257.26
24	11/1/2007	\$69.26	\$1,344.47	472.253	19.412	491.665	\$32,708.27	\$34,052.74	\$0.00	\$0.00	\$1,344.47	\$34,052.74
25	12/3/2007	\$68.78	\$1,347.84	491.665	19.596	511.262	\$33,816.74	\$35,164.58	\$0.00	\$0.00	\$1,347.84	\$35,164.58
26	1/2/2008	\$64.54	\$1,351.21	511.262	20.936	532.198	\$32,996.83	\$34,348.03	\$0.00	\$0.00	\$1,351.21	\$34,348.03
27	2/1/2008	\$62.92	\$1,354.58	532.198	21.529	553.726	\$33,485.87	\$34,840.46	\$0.00	\$0.00	\$1,354.58	\$34,840.46
28	3/3/2008	\$62.36	\$1,357.97	553.726	21.776	575.503	\$34,530.37	\$35,888.34	\$0.00	\$0.00	\$1,357.97	\$35,888.34
29	4/1/2008	\$65.41	\$1,361.37	575.503	20.813	596.315	\$37,643.62	\$39,004.99	\$0.00	\$0.00	\$1,361.37	\$39,004.99



VALUE AVERAGING PERFORMANCE ANALYSIS

Dollar Cost Average Data

Date	Nav	Cash Payment	Shares Before	Shares To Buy	Shares After	Inv. Before	Inv. After	MM Before	MM After	Total Inv.	Total Value
30 5/1/2008	\$66.73	\$1,364.77	596.315	20.452	616.767	\$39,792.13	\$41,156.89	\$0.00	\$0.00	\$1,364.77	\$41,156.89
31 6/2/2008	\$61.31	\$1,368.18	616.767	22.316	639.083	\$37,814.01	\$39,182.19	\$0.00	\$0.00	\$1,368.18	\$39,182.19
32 7/1/2008	\$60.93	\$1,371.60	639.083	22.511	661.594	\$38,939.34	\$40,310.94	\$0.00	\$0.00	\$1,371.60	\$40,310.94
33 8/1/2008	\$61.82	\$1,375.03	661.594	22.242	683.837	\$40,899.76	\$42,274.79	\$0.00	\$0.00	\$1,375.03	\$42,274.79
34 9/2/2008	\$56.10	\$1,378.47	683.837	24.572	708.408	\$38,363.25	\$39,741.71	\$0.00	\$0.00	\$1,378.47	\$39,741.71
35 10/1/2008	\$46.30	\$1,381.91	708.408	29.847	738.255	\$32,799.31	\$34,181.22	\$0.00	\$0.00	\$1,381.91	\$34,181.22
36 11/3/2008	\$42.59	\$1,385.37	738.255	32.528	770.783	\$31,442.30	\$32,827.66	\$0.00	\$0.00	\$1,385.37	\$32,827.66
37 12/1/2008	\$43.34	\$1,388.83	770.783	32.045	802.828	\$33,405.75	\$34,794.58	\$0.00	\$0.00	\$1,388.83	\$34,794.58
38 1/2/2009	\$39.85	\$1,392.30	802.828	34.939	837.767	\$31,992.71	\$33,385.02	\$0.00	\$0.00	\$1,392.30	\$33,385.02
39 2/2/2009	\$35.66	\$1,395.78	837.767	39.141	876.909	\$29,874.77	\$31,270.56	\$0.00	\$0.00	\$1,395.78	\$31,270.56
40 3/2/2009	\$38.61	\$1,399.27	876.909	36.241	913.150	\$33,857.44	\$35,256.71	\$0.00	\$0.00	\$1,399.27	\$35,256.71
41 4/1/2009	\$42.85	\$1,402.77	913.150	32.737	945.887	\$39,128.47	\$40,531.24	\$0.00	\$0.00	\$1,402.77	\$40,531.24
42 5/1/2009	\$45.19	\$1,406.28	945.887	31.119	977.006	\$42,744.61	\$44,150.89	\$0.00	\$0.00	\$1,406.28	\$44,150.89
43 6/1/2009	\$45.13	\$1,409.79	977.006	31.239	1008.244	\$44,092.27	\$45,502.07	\$0.00	\$0.00	\$1,409.79	\$45,502.07
44 7/1/2009	\$48.62	\$1,413.32	1008.244	29.069	1037.313	\$49,020.84	\$50,434.16	\$0.00	\$0.00	\$1,413.32	\$50,434.16
45 8/3/2009	\$50.43	\$1,416.85	1037.313	28.095	1065.408	\$52,311.70	\$53,728.55	\$0.00	\$0.00	\$1,416.85	\$53,728.55
46 9/1/2009	\$52.51	\$1,420.39	1065.408	27.050	1092.458	\$55,944.60	\$57,364.99	\$0.00	\$0.00	\$1,420.39	\$57,364.99
47 10/1/2009	\$51.13	\$1,423.95	1092.458	27.850	1120.308	\$55,857.40	\$57,281.35	\$0.00	\$0.00	\$1,423.95	\$57,281.35
48 11/2/2009	\$54.04	\$1,427.51	1120.308	26.416	1146.724	\$60,541.44	\$61,968.95	\$0.00	\$0.00	\$1,427.51	\$61,968.95
49 12/1/2009	\$55.59	\$1,431.07	1146.724	25.743	1172.467	\$63,746.37	\$65,177.44	\$0.00	\$0.00	\$1,431.07	\$65,177.44
50 1/4/2010	\$53.61	\$1,434.65	1172.467	26.761	1199.228	\$62,855.96	\$64,290.61	\$0.00	\$0.00	\$1,434.65	\$64,290.61
51 2/1/2010	\$55.45	\$1,438.24	1199.228	25.938	1225.166	\$66,497.19	\$67,935.43	\$0.00	\$0.00	\$1,438.24	\$67,935.43
52 3/1/2010	\$59.00	\$1,441.83	1225.166	24.438	1249.603	\$72,284.77	\$73,726.60	\$0.00	\$0.00	\$1,441.83	\$73,726.60
53 4/1/2010	\$60.28	\$1,445.44	1249.603	23.979	1273.582	\$75,326.09	\$76,771.53	\$0.00	\$0.00	\$1,445.44	\$76,771.53
54 5/3/2010	\$55.53	\$1,449.05	1273.582	26.095	1299.677	\$70,722.02	\$72,171.07	\$0.00	\$0.00	\$1,449.05	\$72,171.07
55 6/1/2010	\$52.29	\$1,452.68	1299.677	27.781	1327.458	\$67,960.12	\$69,412.79	\$0.00	\$0.00	\$1,452.68	\$69,412.79
56 7/1/2010	\$55.96	\$1,456.31	1327.458	26.024	1353.482	\$74,284.56	\$75,740.87	\$0.00	\$0.00	\$1,456.31	\$75,740.87
57 8/2/2010	\$53.32	\$1,459.95	1353.482	27.381	1380.863	\$72,167.68	\$73,627.62	\$0.00	\$0.00	\$1,459.95	\$73,627.62
58 9/1/2010	\$58.37	\$1,463.60	1380.863	25.074	1405.938	\$80,600.98	\$82,064.58	\$0.00	\$0.00	\$1,463.60	\$82,064.58



VALUE AVERAGING PERFORMANCE ANALYSIS

Dollar Cost Average Data

	Date	Nav	Cash Payment	Shares Before	Shares To Buy	Shares After	Inv. Before	Inv. After	MM Before	MM After	Total Inv.	Total Value
59	10/1/2010	\$60.72	\$1,467.26	1405.938	24.164	1430.102	\$85,368.53	\$86,835.79	\$0.00	\$0.00	\$1,467.26	\$86,835.79
60	11/1/2010	\$61.68	\$1,470.92	1430.102	23.848	1453.950	\$88,208.69	\$89,679.61	\$0.00	\$0.00	\$1,470.92	\$89,679.61